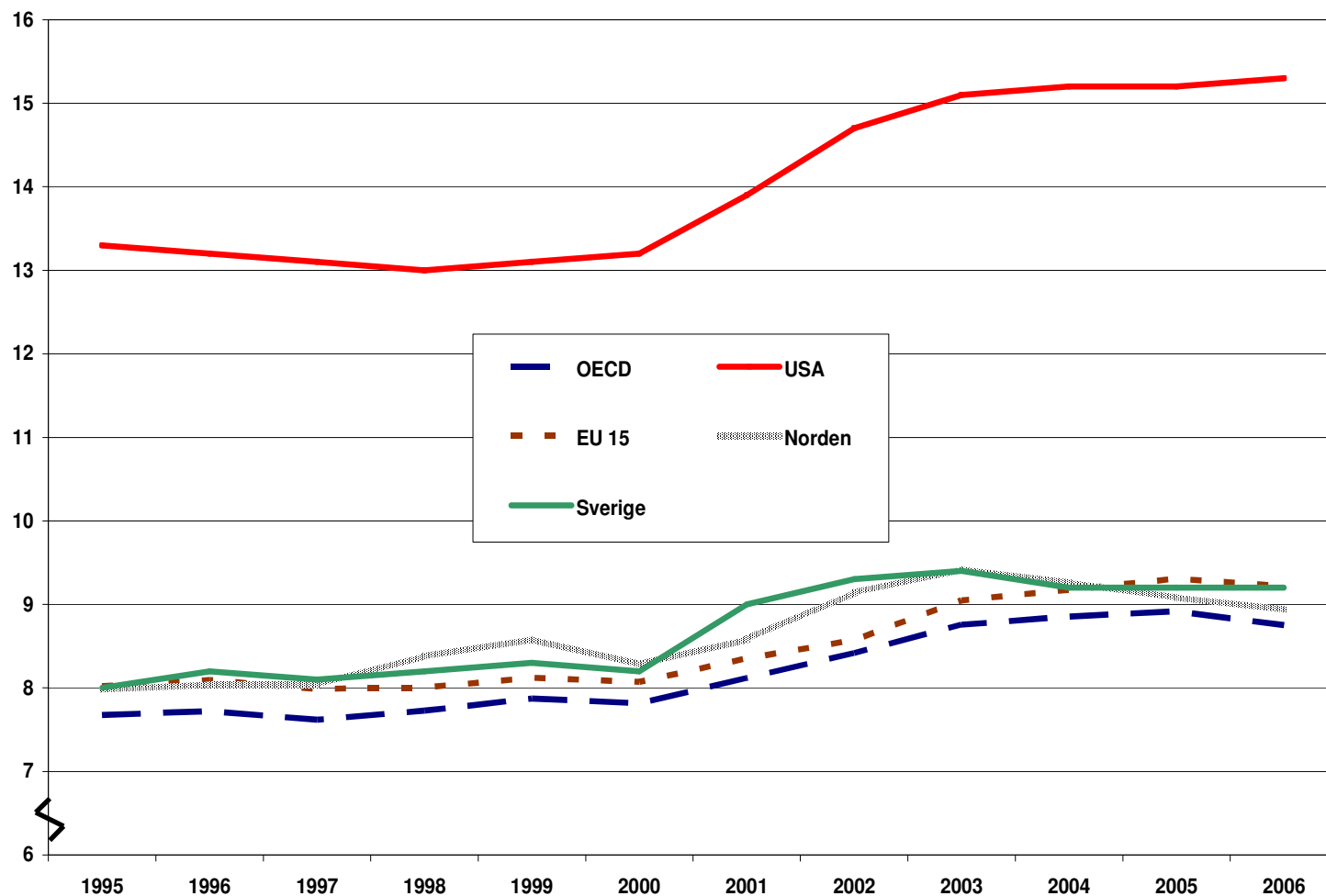


Swedish Health care and HTA Timbro/Stockholm-Network

Tobias Nilsson, Ph.D.
Political advisor
2009-02-23

Health care spending (% of GDP) 1995-2006



- Sweden (green), the increase has stopped and our share now in line with EU15 and the Nordic countries.

Source: OECD 2008

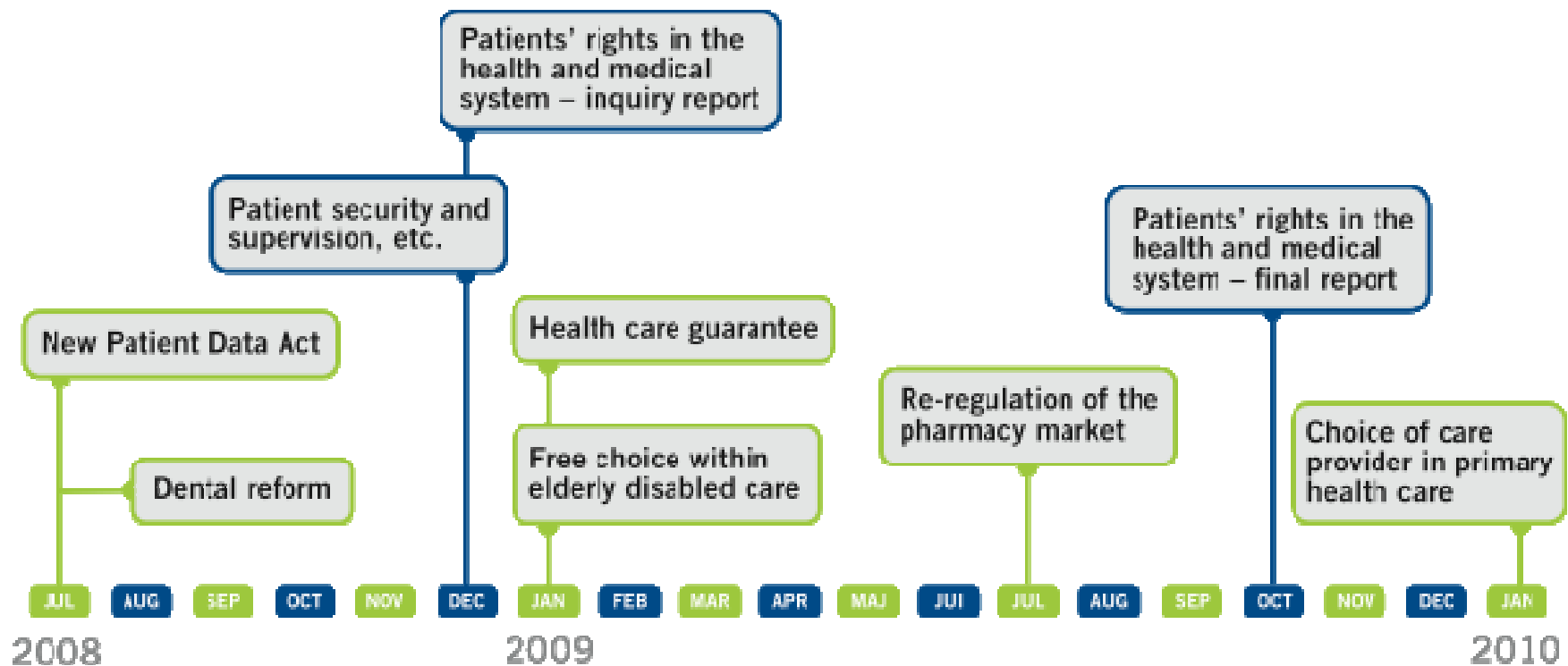
Swedish trends in health care:

- 1990's – increased productivity and efficiency
- 2000's – regional variations become apparent, demand for care on equal terms, enhance national focus
- 2006=> focus on waiting times, freedom of choice and more of the patient's focus

Strength & Weaknesses in Swedish Health Care

Strength	Weakness
<ul style="list-style-type: none">• universal access• cost-efficient• high quality	<ul style="list-style-type: none">• accessibility• lack of focus on patients• patient safety

Initiatives for patient-centered care



Increased focus on quality...

- **Individuals expect more**
 - more educated & informed (internet etc.)
 - wealthier implying increased demands
- **Increased mobility**
 - between different levels of health care
 - geographically (within and between countries)
 - specialization of health care
 - patient mobility increases
- **Technological progress / R&D**
 - new pharmaceuticals & new methods
- **Patient safety**
 - enables increased welfare for given resources
- **IT, benchmarking, compensation & incitement system**
 - tool for increased quality (use or stop-using methods/pharmaceuticals)
 - increased welfare for given resources